

Quechan (Kw'tsaan) School Lands Return



The Native American Land Conservancy (NALC) is exploring opportunities to return California school lands back to the Quechan people, a Southern California tribal community with deep religious, environmental, and cultural roots connecting them to the region's natural resources.

Map Legend

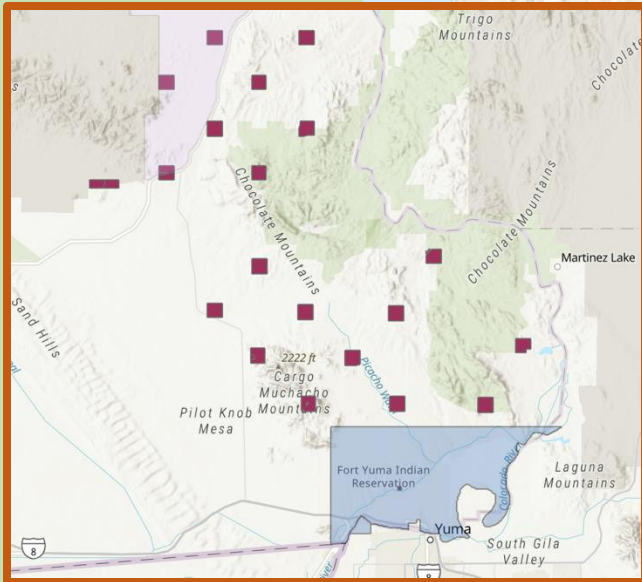
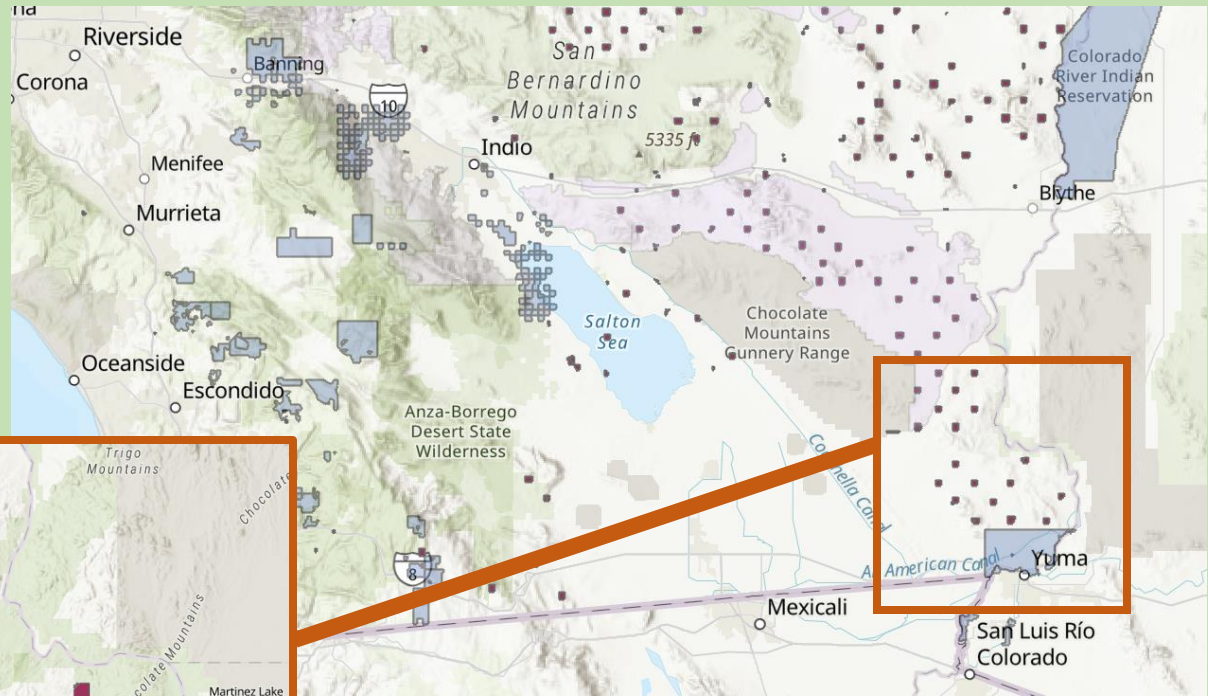
USAIndianReserv



BLM Natl NLCS National Monuments
National Conservation Areas Polygons



School Lands Public - SLC SchoolLands
Public



What are State School Lands?

In 1853, the federal government “granted” lands to the states for the primary purpose of generating revenue to support public schools. These lands were never ceded by tribes. California manages the lands for the teacher's retirement program.

So what?

There is no current legislation (federal or state) that allows the State to legally divest from the lands and return them to tribal communities for management, conservation, and cultural preservation. So, tribes are left to “buy back” their ancestral lands, which can cost millions of dollars.

The Project

With funding from the California Council of Land Trusts (CCLT), NALC is facilitating the acquisition of 17 school lands parcels (10,600+ acres) to be held in trust. NALC aims to assess and appraise the parcels, working alongside the Fort Yuma Quechan Indian Tribe, State Lands Commission, local and regional partners, and philanthropic groups to raise enough funds to “buy back” all 17 parcels. The parcels will be held in trust for the benefit of the public, co-managed by the Quechan Tribe.

Project Needs

Buy-Back Funds

Capacity Building Resources

Support and Collaboration



Project Contact

Kayla Kelly-Slatten
kks@nativeamericanland.org